

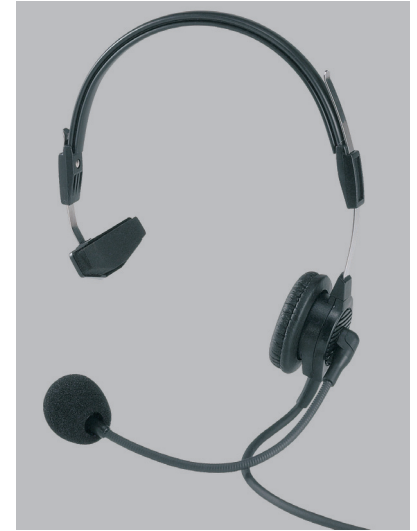
Model PH-88 Headset



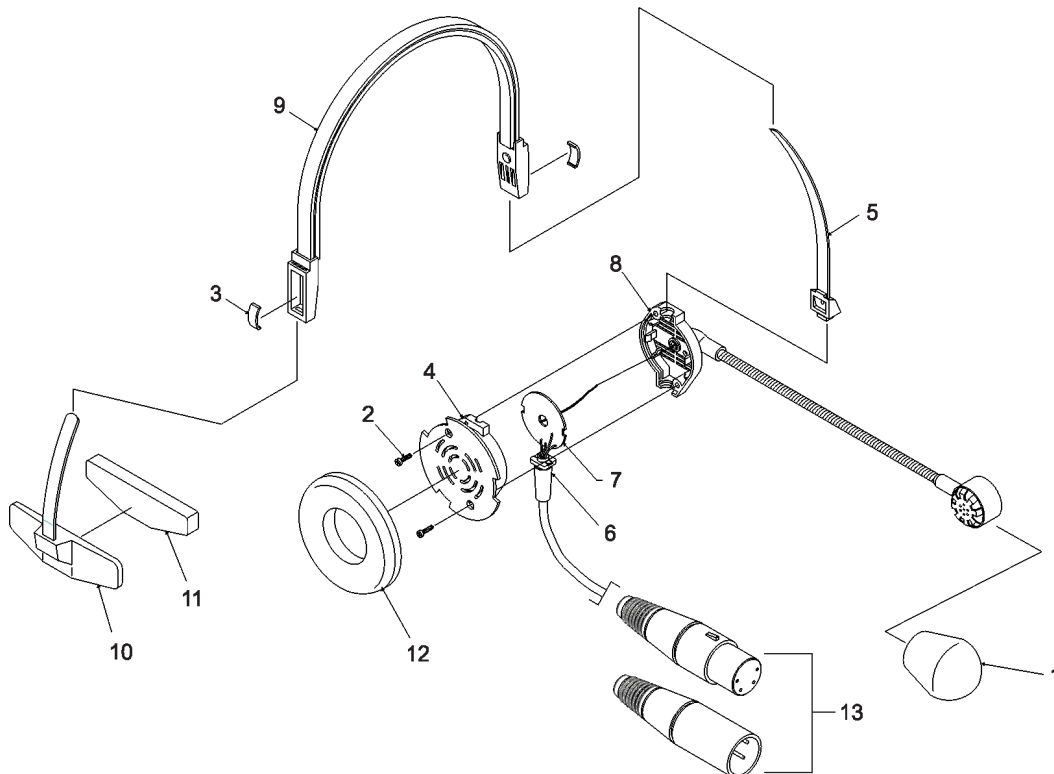
The PH-88 headset is a super lightweight, single-sided headset for the ultimate in day long comfort. The PH-88 features high quality, monaural, dynamic earphones with a dynamic noise cancelling microphone on an adjustable boom that can be bent to practically any mouth-to-mic position. The unit has a straight cord and is available in various connector configurations.

Parts List

Item	Description	Qty.	Part No.
1	Windscreen	1	F.01U.163.625
2	PT-Pan Head Screw, KA15 x 6 (.236) LG, Black	4	F.01U.109.816
3	Glider Spring	2	F.01U.110.016
4	Housing Assy	1	F.01U.110.027
5	Glider Assy	2	F.01U.110.031
6	Cord Unit	1	F.01U.152.068
7	P.C. Board	1	F.01U.152.611
8	Boom Mic/Housing Assy	1	F.01U.110.452
9	Headband Assy	1	F.01U.289.915
10	Temple Plate	1	F.01U.110.211
11	Foam Pad	1	F.01U.110.213
12	Ear Cushion	1	F.01U.109.819
13	Connector, PH-88, XLR-4F	1	F.01U.109.182
	Connector, PH-88R, XLR-4M	1	F.01U.146.871
	Connector, PH-88R5, XLR-5M	1	F.01U.146.873



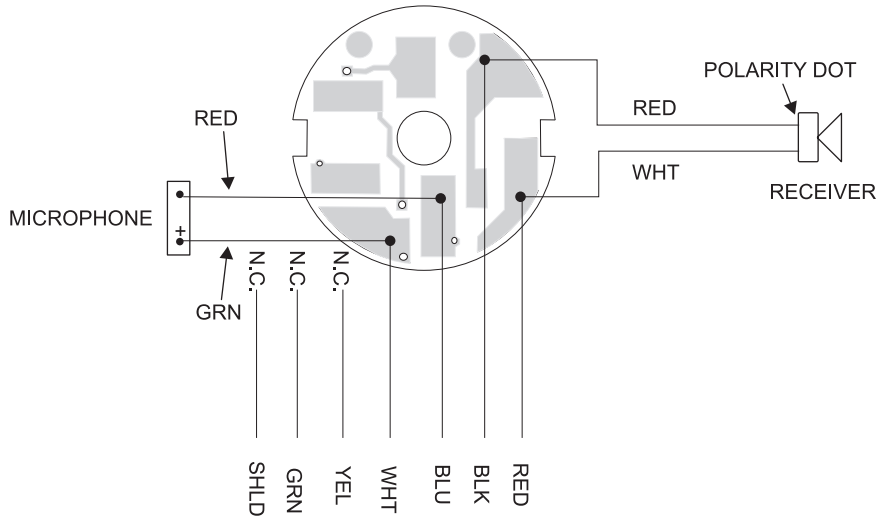
Exploded View



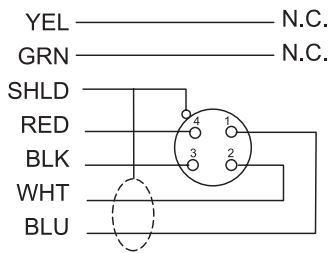
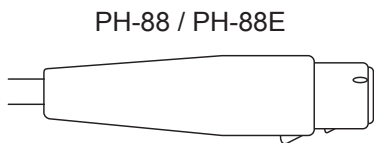
Specifications

Receiver Type.....	Dynamic
Receiver Impedance.....	300Ω
Microphone Type.....	Dynamic
Microphone Impedance.....	200Ω
Weight.....	4.6 oz (130.41 g)
Cord.....	6 ft (1.83 m), Straight

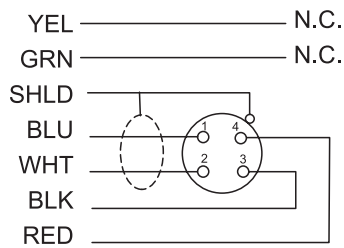
Wiring Diagram and Connector Wiring



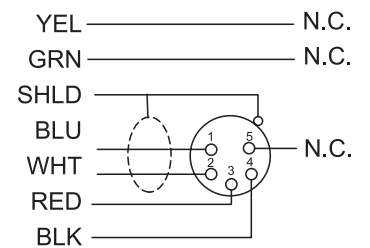
Wiring Diagram



F.01U.117.489 (PH-88)
 F.01U.117.492 (PH-88E)



F.01U.117.490



F.01U.117.491

The specification information listed is subject to change without notification.