



ClipMic digital 2

User's Guide - February 2021 - English



Contents

Contents	2
Overview	3
Introduction	3
In the Box	3
Available Software	3
System Requirements	3
Register your product	3
Register Now: www.apogeedigital.com/support/register	3
Getting Started	4
Overview	4
Download Software	5
Mic Placement	6
Connecting ClipMic digital	7
Recording with ClipMic digital	8
Working with iPhone/iPad	8
Apogee Maestro	8
Apogee MetaRecorder	9
Working with macOS	10
Working with Windows 10	11
Configuring Audio Applications	13
Ableton Live & ASIO4All	13
Zoom	14
Final Cut Pro Record Voiceover	15
Specifications	16
Additional Support	17

Overview

Introduction

ClipMic digital is a USB lavalier (lapel) mic that offers crisp, clear audio in a discreet and easy-to-use package, compatible with Mac, Windows and iPhone/iPad.

Whether you're creating social media content, live streaming or shooting your next film, ClipMic digital ensures that your message comes across loud and clear.

In the Box

- 1 ClipMic digital lavalier microphone
- 1 Spring-loaded mic clip
- Metal windscreen
- Foam windscreen
- USB-C to Micro USB cable
- USB-A to Micro USB cable
- Lightning to Micro USB cable

Available Software

- Apogee Maestro for iOS
- Apogee MetaRecorder for iOS

System Requirements

- iOS 13 or later
- macOS 10.13.6 or later
- Windows 10 Anniversary update or later

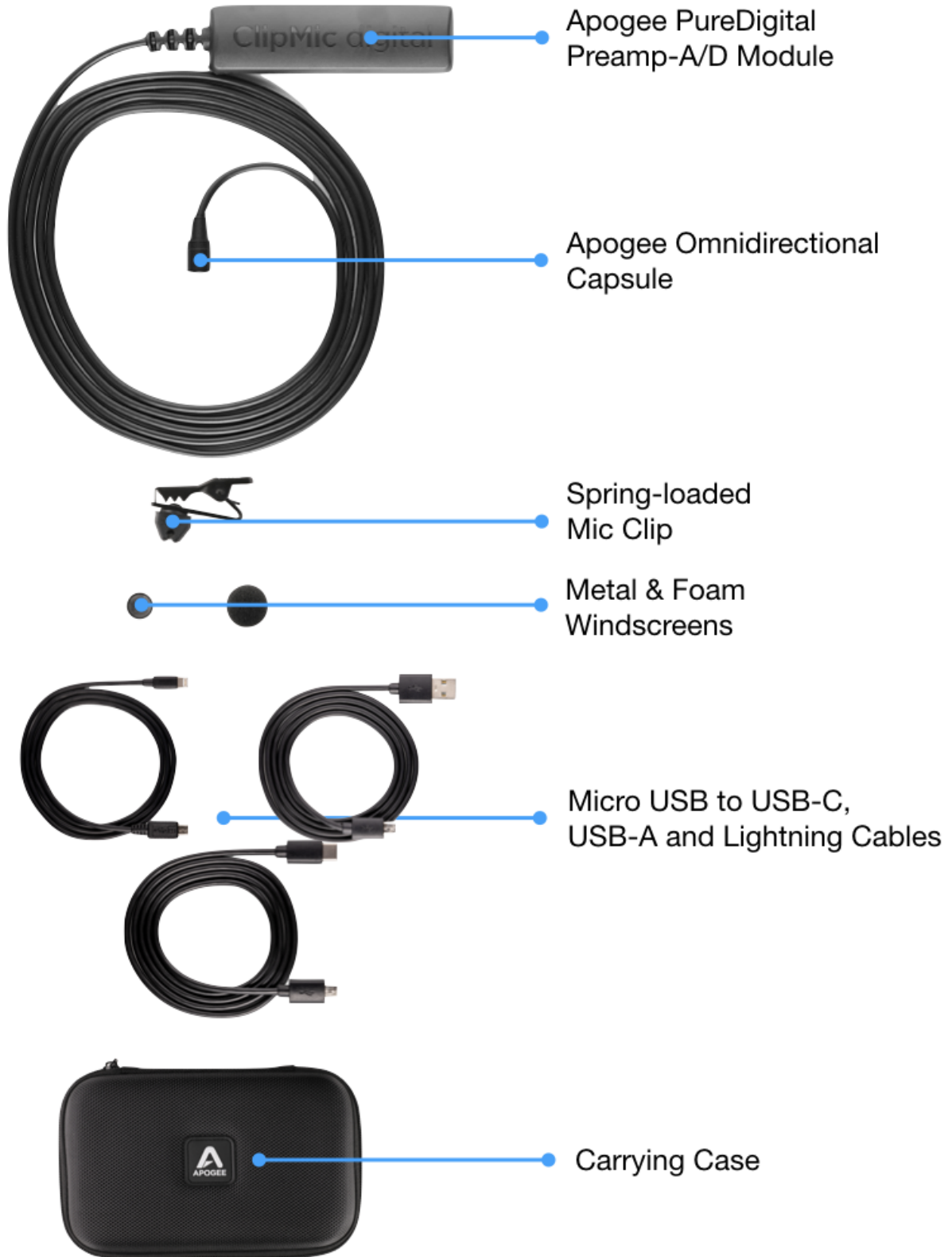
Register your product

- Access Apogee's expert Technical Support for free
- Receive important product update information by email
- Take the Customer Satisfaction Survey for a chance to win Apogee gear!

Register Now: www.apogeedigital.com/support/register

Getting Started

Overview



Download Software

To download Apogee software for iOS, open the Apple App Store on your iPhone/iPad and search “Apogee Electronics”. Two apps are available:

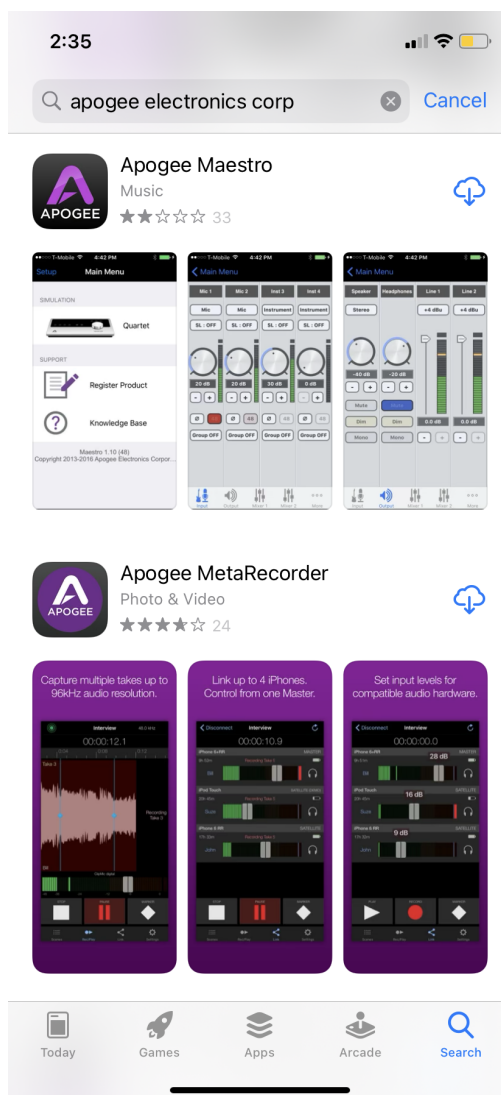
Apogee Maestro - Apogee Maestro offers control of ClipMic digital settings, including Input Gain and DSP Processing. No video or audio recording is provided by the app.

Use Apogee Maestro when recording to video and audio apps like Camera, Voice Memos, GarageBand, Filmic Pro, Mavis Camera and others.

Apogee MetaRecorder - Apogee MetaRecorder offers all the control of Maestro plus stereo audio recording up to 96kHz, Final Cut Pro-compatible metadata entry, and the Link feature to operate up to 4 iPhones/iPads wirelessly.

Find out more about MetaRecorder here:

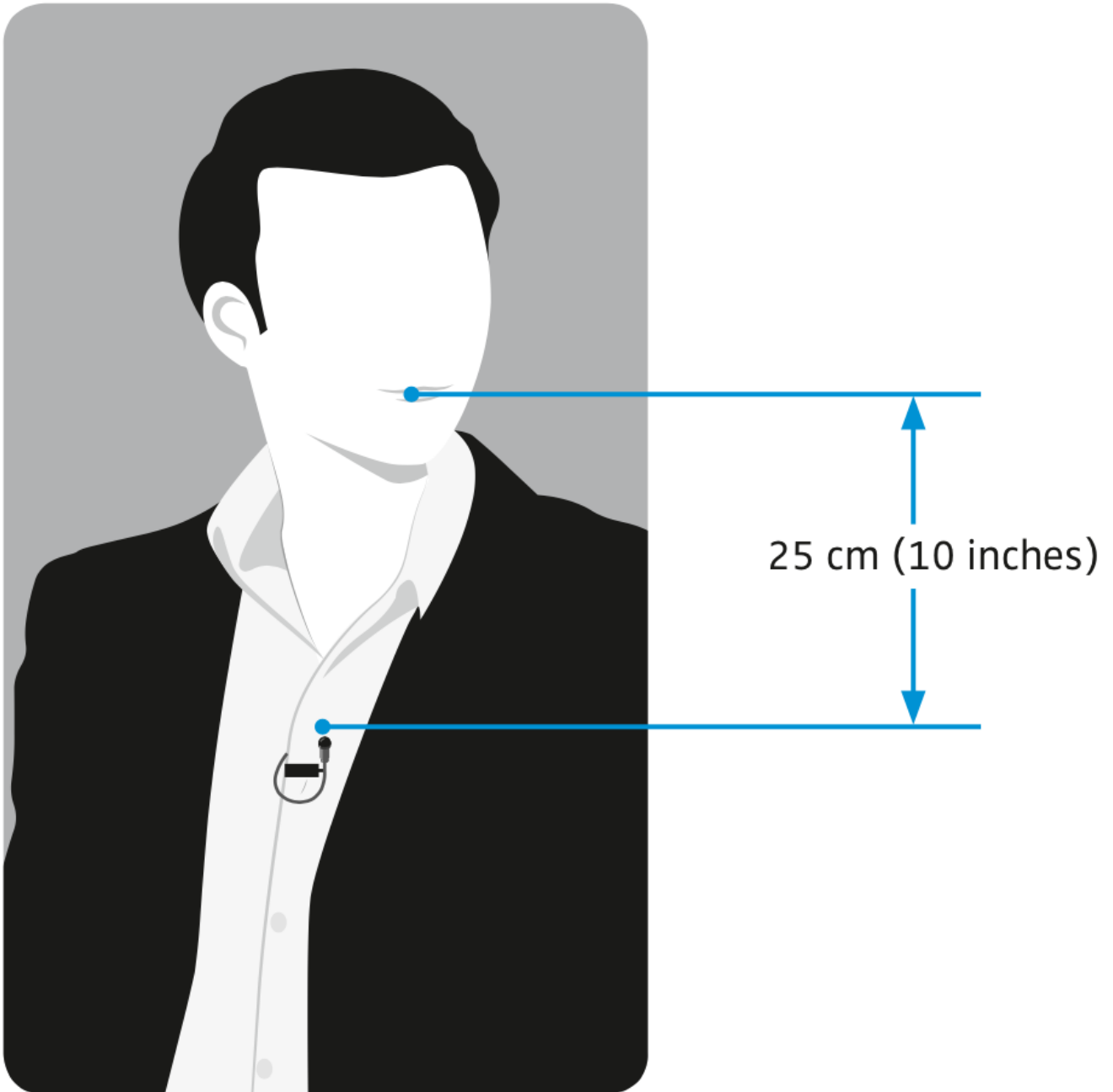
<https://apogeedigital.com/products/metarecorder>



When using ClipMic digital with macOS computers, no software is required. See [Working with macOS](#) for more information.

When using ClipMic digital with Windows 10 computers, the ASIO4All Universal ASIO driver may be required, based on the audio software you're using. See [Working with Windows 10](#) for more information.

Mic Placement



Connecting ClipMic digital

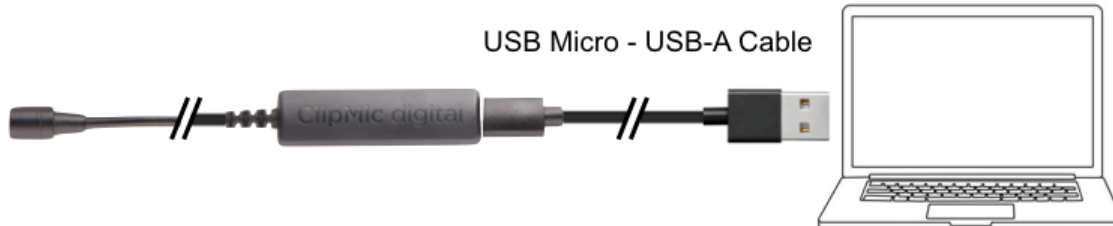
iPhone/iPad



USB-C-equipped computers & iPad Pro



USB-A-equipped Mac or Windows computer



Recording with ClipMic digital

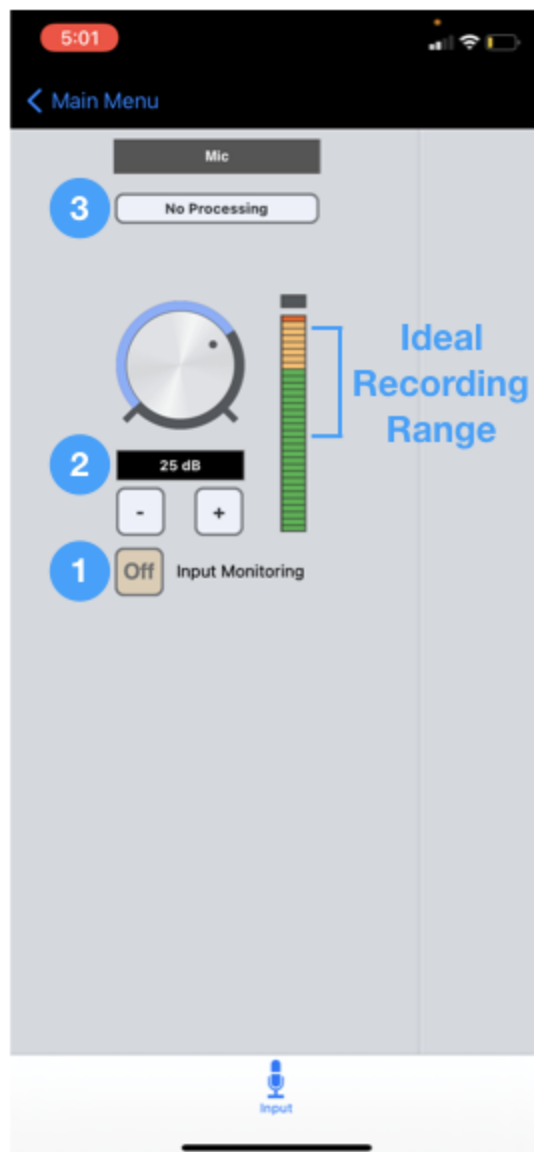
Working with iPhone/iPad

Audio hardware device selection is done automatically in iOS, so that when a device is connected it's ready to use with all audio and video apps.

Note: ClipMic digital, like all USB mics, is not compatible with iOS "telephony" apps like Phone, Facetime and Skype. ClipMic is compatible with the macOS and Windows 10 versions of Facetime and Skype.

Apogee Maestro

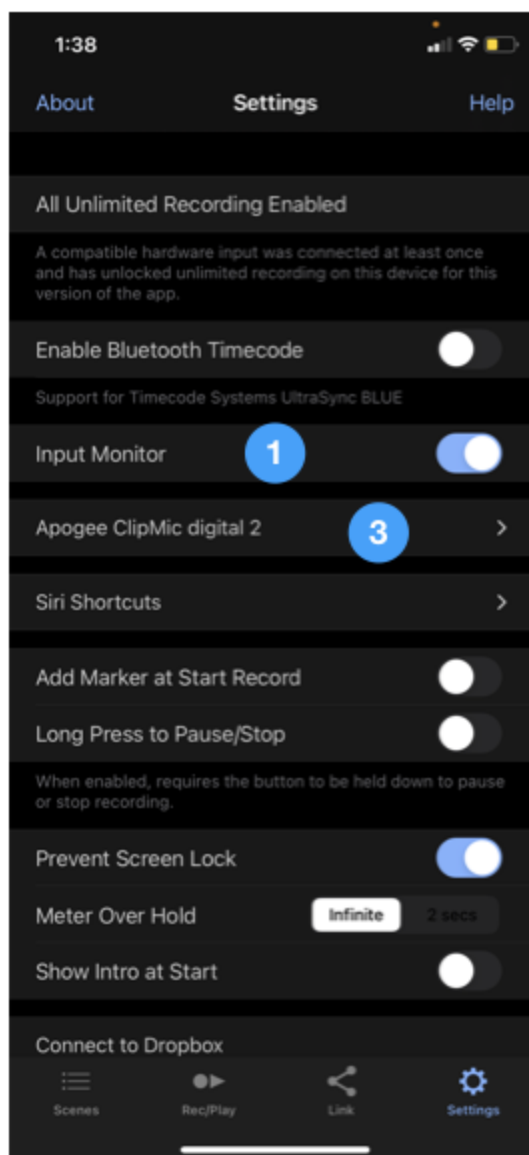
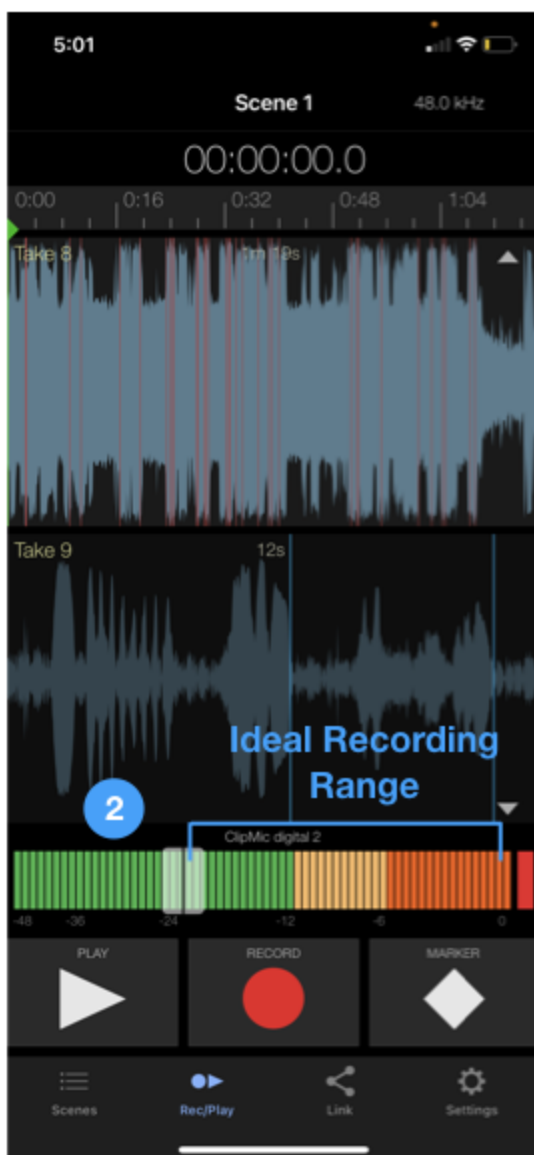
1. To hear input, tap the Input Monitoring button to ON.
2. To set Input Gain, speak into the mic at the volume you plan to record at, then adjust the Input Gain so the audio level falls within the ideal recording range on the level meter as shown at right.
3. To apply corrective DSP, tap the Processing button:
 - a. Engage Rumble Reducer if you hear undesirable low frequency sound from air conditioners and other mechanical equipment.
 - b. Engage Hiss Reducer to attenuate undesirable high frequency sounds.
 - c. Engage Overload Eliminator if the audio input is loud or inconsistent with large peaks.
4. Once Input Gain and DSP are set, open your preferred audio/video application - iOS automatically assigns ClipMic digital as the audio input for the app.



Apogee ClipMic digital 2 - User's Guide

Apogee MetaRecorder

1. To hear input, tap the Settings tab, then slide Input Monitoring to the right.
2. To set Input Gain, tap the Rec/Play tab, then slide the Input Gain knob so the audio level falls within the ideal recording range on the level meter as shown below.
3. To apply corrective DSP, tap the Settings tab, then tap the Apogee ClipMic digital 2 button, then tap the desired processing as described above.
4. To learn more about MetaRecorder, tap the Settings tab, then tap Help to access the in-app User's Guide.

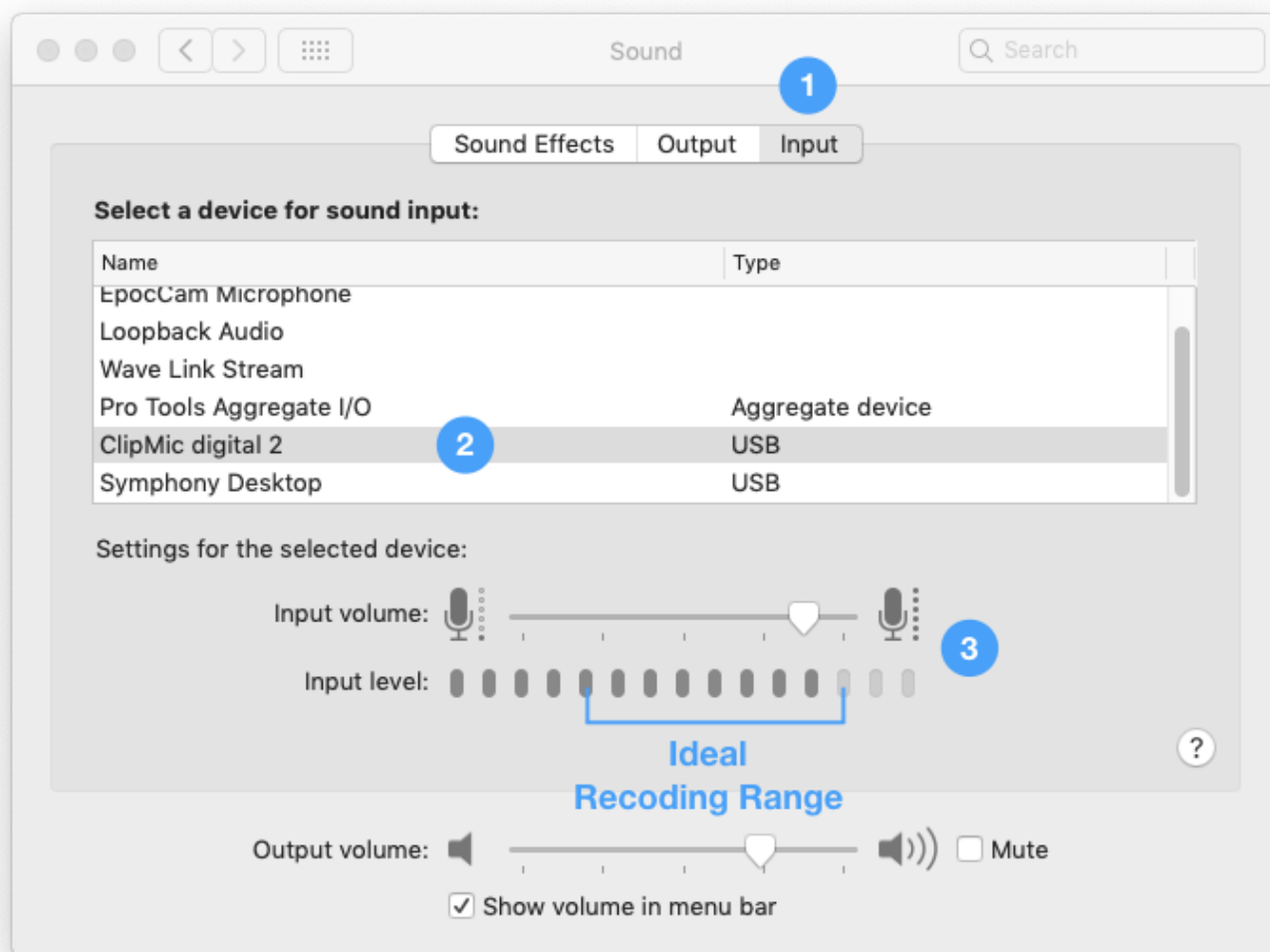


Working with macOS

No software is required when using ClipMic digital on macOS computers. To select DSP Processing, connect ClipMic digital to an iOS device, select the processing in the Apogee Maestro app, then connect to the macOS computer.

To set Input Gain:

1. Open System Preferences > Sound, then choose the Input tab.
2. Select ClipMic digital 2 in the “Select a device for sound input:” list.
3. Speak into the mic at the volume you plan to record at, then adjust the Input volume so the audio level falls within the ideal recording range on the level meter as shown below.
4. It may be possible to adjust Input Gain directly in your audio application; see Configuring Audio Applications.



Working with Windows 10

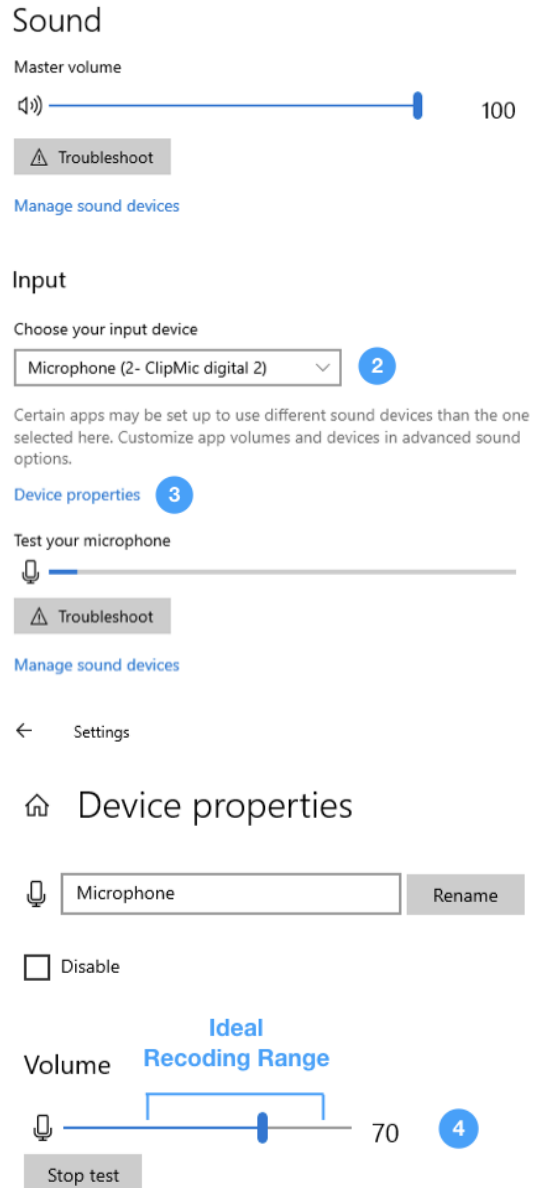
- No software is required when using ClipMic digital on Windows 10 computers and apps like Zoom, Skype, etc.
- To use ClipMic digital with DAWs like Pro Tools, Ableton Live, and others, download the ASIO4All app here: <https://www.asio4all.org>.
- To select DSP Processing, connect ClipMic digital to an iOS device, select the processing in the Apogee Maestro app, then connect to the Windows computer

To set Input Gain:

1. Open System Settings, then click the Sound tab.
2. In the “Choose your input device” dropdown list, choose Microphone (ClipMic digital 2).
3. Click Device properties under the input device list.

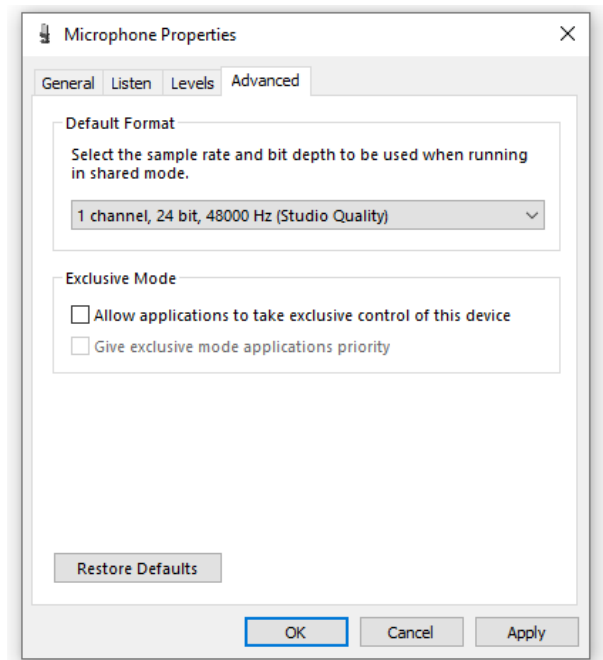
4. Click Start Test, speak into the mic at the volume you plan to record at, then adjust the Volume so the audio level falls within the ideal recording range on the Volume meter, as shown below.
5. It may be possible to adjust Input Gain directly in your audio application; see Configuring Audio Applications.

6.



Apogee ClipMic digital 2 - User's Guide

7. In the case where WDM and ASIO audio drivers are both in use (for example, if Zoom and Ableton Live are both open), there are a few advanced properties to set for stable performance.
 - a. From the Microphone Device Properties page, click Additional device properties.
 - b. In the Microphone Properties window, click the Advanced tab.
 - c. Set the Default Format sample rate to match the sample rate of your DAW session.
 - d. Uncheck “Allow applications...”
 - e. Repeat steps a-c for your Speaker device.
 - f. When you change the sample rate here, it may be necessary to re-launch apps for audio to pass.

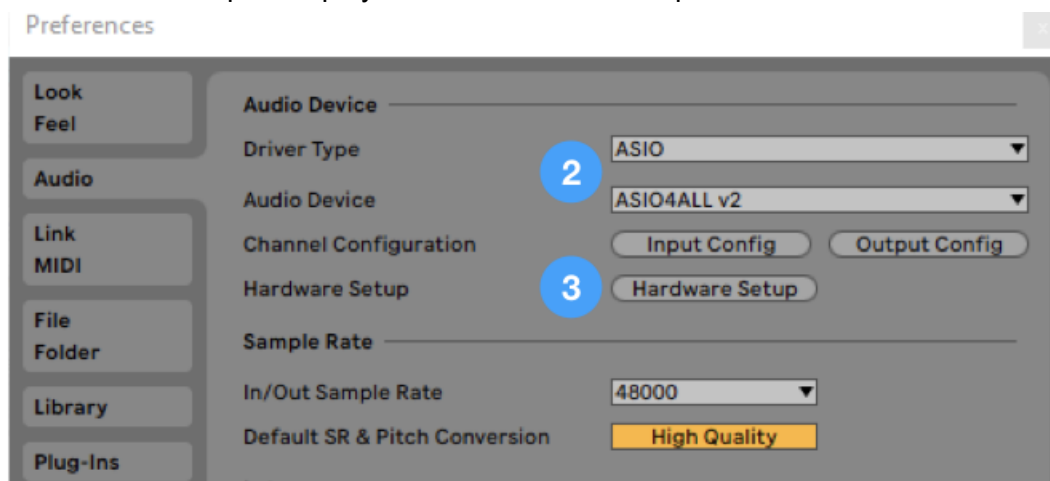


Configuring Audio Applications

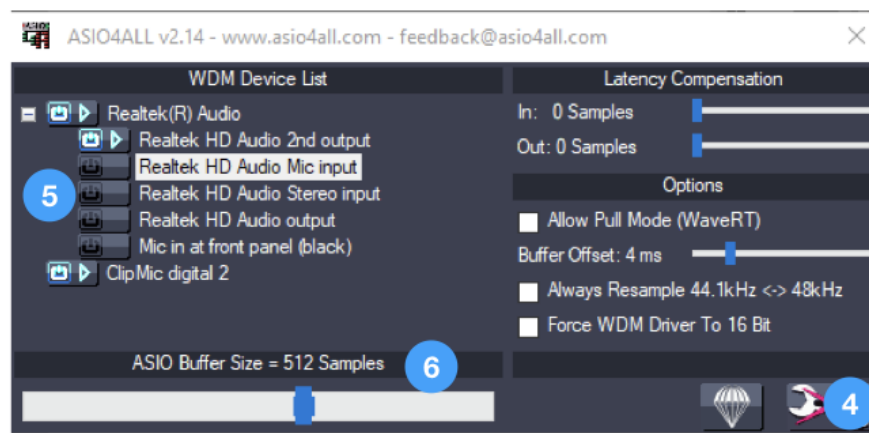
Ableton Live & ASIO4All

For the best results when using ClipMic digital with DAWs on a Windows 10 computer, install the ASIO4All driver available from <https://www.asio4all.org>.

1. In Ableton, select Options > Preferences, then click the Audio tab.
2. Under Audio Device, set Driver Type to ASIO and Audio Device to ASIO4ALL v2.
3. Click Hardware Setup to display the ASIO4ALL control panel.



4. In the ASIO4All control panel, click the Advanced button in the lower right corner.
5. In the WDM Device List, select the built-in output device (speakers or headphones), then select ClipMic digital 2. The output devices available on your computer may differ from the image shown below.
6. Adjust the ASIO Buffer Size - a larger buffer helps avoid clicks and pops but also results in longer latency.



Apogee ClipMic digital 2 - User's Guide

Zoom

1. Sign into Zoom, then click on the Settings gear icon in the upper right corner.
2. Click the Audio tab.
3. Choose a built-in speaker or headphone output in the Speaker dropdown menu.
4. Choose ClipMic digital 2 in the Microphone dropdown menu. To record and play back a test signal, click Test Mic.
5. Let Zoom set the Input Gain by checking “Automatically adjust microphone volume”.

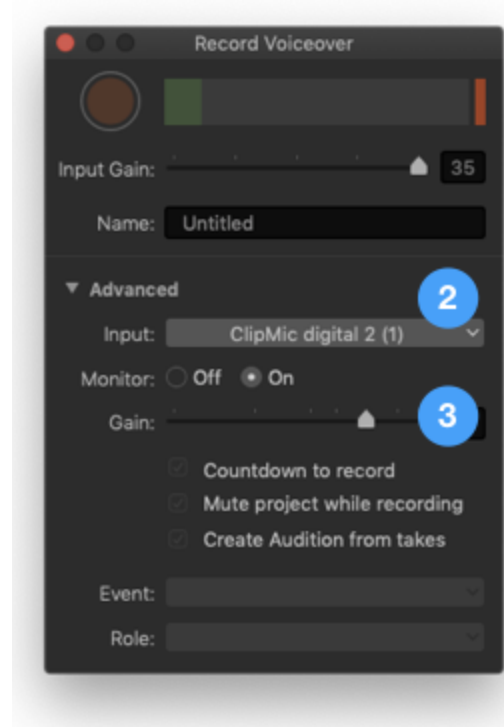
The screenshot shows the Zoom settings interface. On the left is a sidebar with various settings categories: General, Video, Audio, Share Screen, Chat, Virtual Background, Recording, Profile, Statistics, Keyboard Shortcuts, and Accessibility. The 'Audio' tab is selected and highlighted with a blue bar and a blue circle containing the number '2'. The main settings area is divided into 'Speaker' and 'Microphone' sections. In the 'Speaker' section, the dropdown menu is set to 'Built-in Output (Internal Speakers)', with a blue circle containing the number '3' next to it. Below this are 'Output Level' and 'Output Volume' sliders. In the 'Microphone' section, the dropdown menu is set to 'ClipMic digital 2', with a blue circle containing the number '4' next to it. Below this are 'Input Level' and 'Input Volume' sliders. A blue circle containing the number '5' is positioned next to the checkbox 'Automatically adjust microphone volume', which is currently unchecked. At the bottom, there are three checked checkboxes: 'Join audio by computer when joining a meeting', 'Mute microphone when joining a meeting', and 'Press and hold SPACE key to temporarily unmute yourself'. A horizontal line separates these from the 'Use separate audio device to play ringtone simultaneously' checkbox, which is unchecked.

Apogee ClipMic digital 2 - User's Guide

Final Cut Pro Record Voiceover

Within the Final Cut Pro app is a specialized window for recording voiceovers for your video, and ClipMic digital 2 is the perfect mic for the job.

1. In Final Cut Pro, choose Window > Record Voiceover.
2. In the Record Voiceover window, open the Advanced disclosure triangle, then choose ClipMic digital 2 in the Input dropdown menu.
3. Set ClipMic's Input Gain using the Gain slider.



Specifications

Frequency Response	30 - 20,000 Hz
Gain Range	0 to 35 dB
Max Sound Pressure Level (SPL)	127dB @ minimum gain 92dB @ maximum gain
Sensitivity	-46 dBfs (80 dB SPL, 1kHz) @ minimum gain -11 dBfs (80 dB SPL, 1kHz) @ maximum gain
Equivalent Noise Level (A weighted)	-90dBfs @ minimum gain -68 dBfs @ maximum gain
Sample Rates	44.1, 48, 88.2, 96 kHz
Capsule diameter	4mm
Capsule pick-up pattern	omnidirectional
Capsule type	Pre-polarized condenser microphone
Mic cable length	4 ft. (1.2m)
Adaptor cable length (subject to change)	USB-A : 3.3 ft. (1m) USB-C: 3.3 ft. (1m) Lightning: 1ft. (0.3m)

Additional Support

For more information

- Apogee KnowledgeBase and FAQs
- Informational Videos
- Apogee Product Registration
- How to contact Apogee Technical Support

Please visit:

www.apogeedigital.com/support

Version 1.0a

Warranty Information and Legal Notices

APOGEE ELECTRONICS CORPORATION warrants this product to be free of defects in material and manufacture under normal use for a period of 12 months. The term of this warranty begins on the date of sale to the purchaser from an authorized Apogee dealer (proof of purchase in the form of a receipt may be required). Units returned for warranty repair to Apogee or an authorized Apogee warranty repair facility will be repaired or replaced with a functional equivalent product that is new or refurbished at the manufacturer's option, free of charge. Please note this guarantee may be subject to other conditions as dictated by the customer's legal warranty rights under the applicable national legislation governing the sale of consumer goods.

Apogee reserves the right to change or improve design at any time without prior notification. Design changes are not implemented retroactively, and the incorporation of design changes into future units does not imply the availability of an upgrade to existing units. This warranty is void if Apogee determines, in its sole business judgment, the defect to be the result of abuse, neglect, alteration or attempted repair by unauthorized personnel. The buyer acknowledges and agrees that in no event shall the company be held liable for any special, indirect, incidental or consequential damages, or for injury, loss or damage sustained by any person or property, that may result from this product failing to operate correctly at any time.

Warranty details are subject to change. For the latest warranty information please visit www.apogeedigital.com.